

CATegorical Dominoes

From The World of Brian P. Cleary: www.brianpcleary.com

Instead of dots, these dominoes have homophones! Cut out the dominoes provided. If you want to make a sturdier game, glue the printouts to pieces of cardboard. This game works best with two players.

HERE'S HOW TO PLAY:

Step 1: Players place the dominoes face down on the table and mix them up.

Step 2: Each player chooses seven dominoes. Players should make sure not to let anyone else see their dominoes!

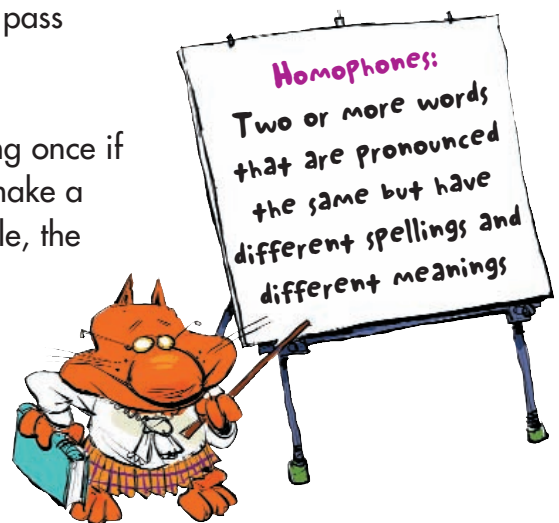
Step 3: The player whose birthday is closest goes first. That player picks any domino from his or her pile and lays it face up on the table.

Step 4: The second player has to lay a domino that is a homophone to one of the words on the first domino. If a player has a tile with a blank on it, then that tile can represent any word the player chooses. The tiles should be placed so the homophones are end to end, unless the matching tile is a double. (A double is a tile with a matched pair of homophones on it.) Then the tile should be placed so that it forms a "T" with the previous tile. Once a double has been played, the game can branch off in different directions!

Step 5: If the second player doesn't have a homophone that goes with the dominoes that have already been played, he or she has to draw from the pile. If the player still doesn't have a match, he or she must pass and it is the next player's turn.

Step 6: Players continue playing their pieces, drawing once if they cannot make a match. When a player cannot make a match and there are no more dominoes left in the pile, the player passes and it is the next player's turn.

Step 7: The first person to run out of dominoes wins the game! (If everybody passes, the game is a tie!)





flea/flee



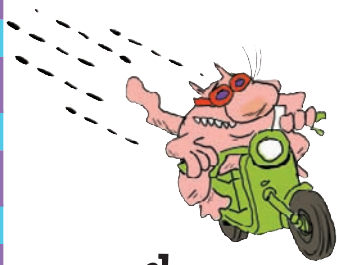
flea/flee



flea



toad



flee



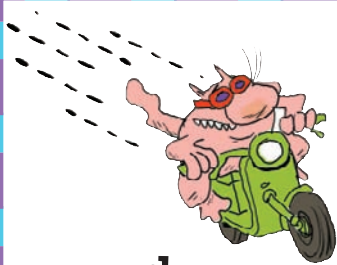
horse



flea



whale



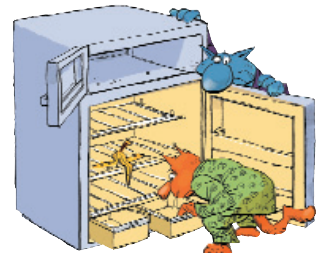
flee



pair



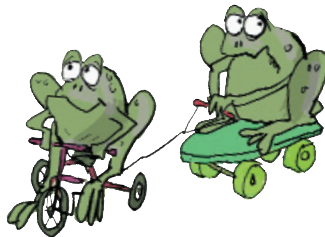
flea



bare



toad/towed



toad/towed



towed



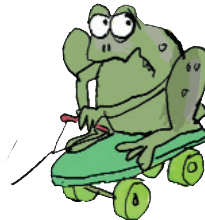
hoarse



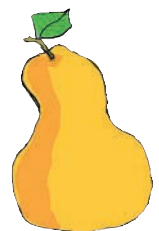
toad



wail



towed



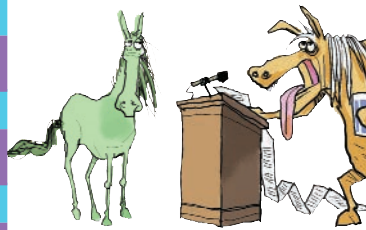
pear



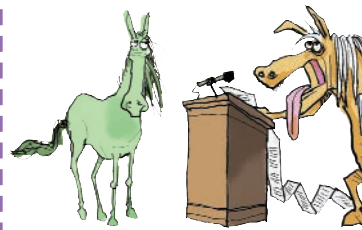
toad



bear



horse/horse



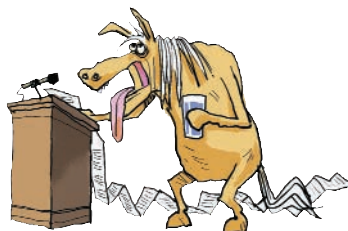
horse/horse



horse



whale



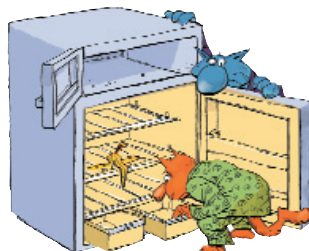
horse



pair



horse



bare



whale



wail



wail



pear



whale



bear



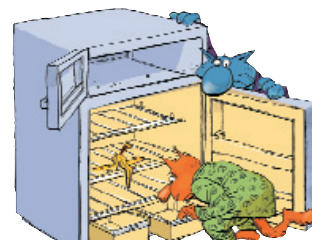
pair/pear



pair/pear



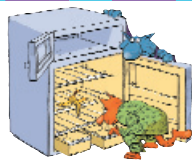
pair



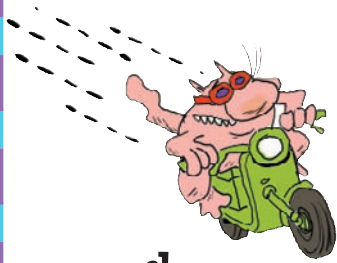
bare



bare/bear



bare/bear



flee



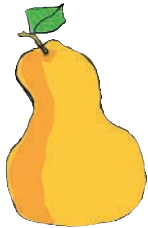
towed



hoarse



wail



pear



bear